



精密 · 标准 · 高端
PRECISION STANDARD HIGH END



专业微型齿轮传动系统 方案解决提供商

PROFESSIONAL MICRO GEAR TRANSMISSION SYSTEM



广东西格传动智能科技有限公司
Guangdong Siggear Drive Intelligent Technology Co.,Ltd

CONTENTS

目录

广东西格传动智能科技有限公司

GUANGDONG SIGGEAR DRIVE INTELLIGENT TECHNOLOGY CO.,LTD.

02

公司简介	03
企业文化	04
发展历程	05

Company Profile	03
Company Culture	04
Development Path	05

06

核心优势	07
定制研发	08
核心技术	09

Core Advantages	07
Custom R&D	08
Core Technology	09

09

产品介绍	10
应用领域	14

Product Description	10
Application Field	14

15

团队介绍	18
西格工厂	19
荣誉资质	21
技术参数	25

Team Introduction	18
Our Factory	19
Honor & Ability	21
Technology Parameters	25

关于西格

ABOUT US

公司简介

Company Profile

企业文化

Company Culture

发展历程

Development Path

SigGear
西格传动



INTRODUCTION

公司简介

西格传动位于珠三角腹地东莞市谢岗镇粤海智造中心、交通便利、环境优美、独栋厂房、生产与办公面积达10000多平米。公司始于2008年,专业提供齿轮传动系统解决方案、是一家集研发、设计、生产、销售为一体的高新技术企业,拥有专业生产技术和研发设计人员。公司主营机器人关节模组、微型摆线针轮齿轮箱、内嵌式齿轮箱电机模组、谐波减速机、行星齿轮箱、减速电机、正齿轮箱、齿轮配件、精密配件的研发设计和生产组装,广泛应用于机器人、无人机、医疗设备、智能家居、智慧农业、汽车电子、园林工具、工业自动化等领域。

公司为国际知名企业提供完整的核心传动部件解决方案,拥有进口自瑞士、德国、日本的高精密生产设备和高精度检测设备,精度可达到国标5级,单日产能可达数万套,目前拥有11条组装生产线,通过了ISO9001国际质量管理体系和IATF16949汽车电子行业品质体系认证。



SINCE 2008

公司始于2008年

SigGear began in 2008 and specializes in providing gear transmission system solutions. It is a high-tech enterprise integrating R & D, design, production and sales. It has professional production technology and R & D designers. The company is mainly engaged in the R & D, design, production and assembly of robot joint power module, cycloidal pin gear planetary gearbox, embedded gearbox motor module, harmonic reducer, planetary gearbox, reduction motor, spur gear box, gear accessories and precision accessories. It is widely used in robots, UAVs, smart homes, automotive electronics, medical equipment, garden tools, industrial automation and other fields.



COMPANY CULTURE

企业文化

经营理念 Business philosophy

成就客户 专注创新 精益求精 团结奋进

Clients , Focus , Innovation , Cooperation

企业使命

突破传动技术壁垒
传承匠心智造精神
振兴民族传动工业

Our Mission

Break through the barriers of transmission technology, inherit the spirit of ingenuity, and revitalize the national transmission industry.



核心价值观

以客户价值为中心

以产品质量为根本

以奋进者为荣誉

Core value

Focus on customer value

Based on product quality

Honor the pioneers

企业愿景

成为一家让客户信赖，让员工自豪，
让国人骄傲的企业

Corporate vision

Become an enterprise that makes customers trust, employees proud, and national honored



HISTORY

发展历程

2005

2005年公司创始人王建先生在深圳市开始传动零件贸易活动
2008年9月16日，西格传动正式成立，4名合伙人投资8万元，开始生产齿轮、蜗杆，这是我们的前身

In 2005, Mr. Wang Jian, the founder of the company, started the trade activities of transmission parts in Shenzhen. On September 16, 2008, SigGear Transmission was officially established, which are our predecessors.

2007

公司创始人从事传动部件的国内外贸易

The founder of the company is engaged in domestic and foreign trade of transmission parts.



2008

购置设备，开始生产齿轮、蜗杆等传动部件

Purchased equipment and started production of gears, worms and other transmission components.



2011

第一套牙医手机行星齿轮箱供货
第一套扫地机器人齿轮箱供货

Supply of the first set of planetary gearbox for medical field.
Supply of the first set of sweeping robot gearbox.

2013

设立惠州西格传动，成立生产基地

Set up Huizhou SigGear branch and building the production base.



2014

开始汽车尾门撑杆齿轮箱设计开发

Started the design and development of automobile tailgate strut gearbox.

■ 2016

成立西格传动研发中心

Established SigGear R&D Center



■ 2021

生产基地迁至东莞市谢岗镇粤海智造中心 A22 栋，并独立研发设计量产机械臂、外骨骼齿轮箱

The production base was moved to Building A22, Yuehai Intelligent Manufacturing Center, Xiegang Town, Dongguan City, and independently developed and designed mass-produced robotic arms and exoskeleton gearboxes.



■ 2022

成功研发出国内最小的摆线针轮齿轮箱 成立“广东西格华创精密智造有限公司” 主要研发和生产塑胶齿轮箱

Successfully developed the smallest cycloidal gearbox in the industry. Established "Guangdong Zige Huachuang Precision Intelligent Manufacturing Co., Ltd."

Mainly develop and produce plastic gearboxes



■ 2023

成立“西格机器人智能科技（深圳）有限公司”子公司，主要研发机器人关节齿轮箱电机模组

Established a subsidiary of "Sig Robot Intelligent Technology (Shenzhen) Co., Ltd.", mainly developing robot joint gearbox motor modules.



产品优势

ADVANTAGES

核心优势

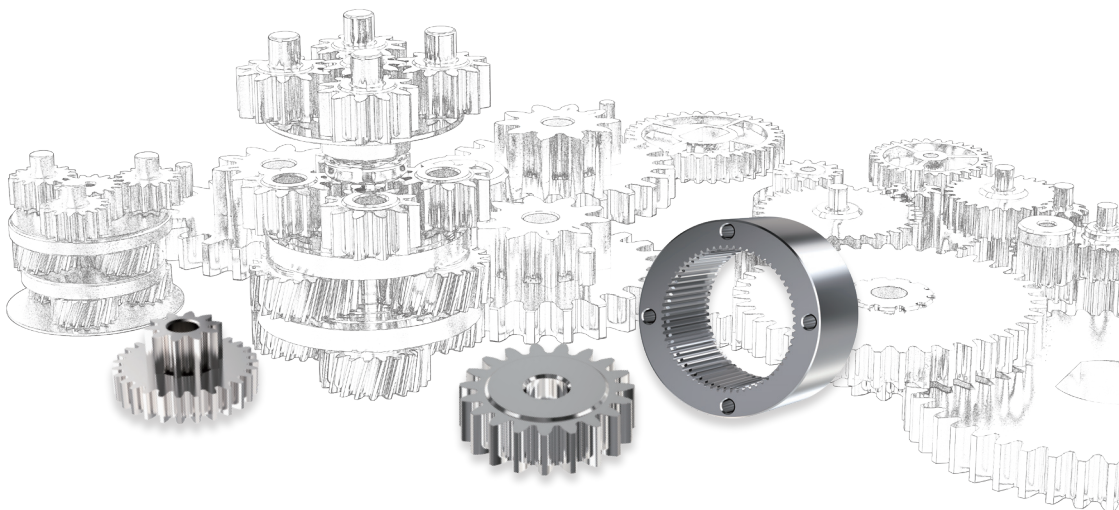
Core Advantages

定制生产

Customized Production

自主研发

Independent R&D

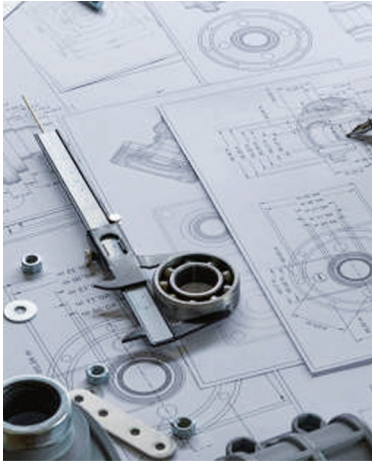
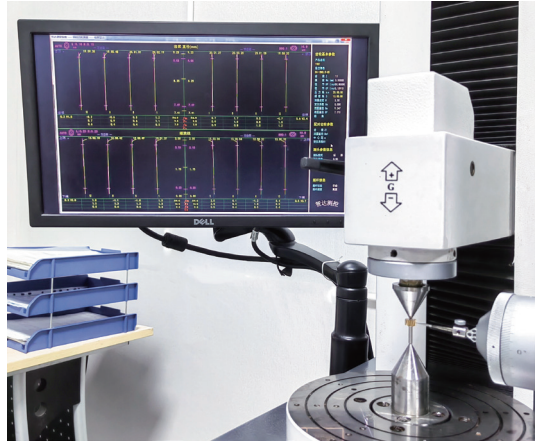


匠心智造，品质稳定

高精度生产设备，高精度检测仪器
专注生产微型齿轮减速箱，
专精于模数1.0以下

Stable performance

High-precision production equipment,
high-precision testing equipment.
Focus on the production of micro gear reducers.
specializing in modules below 1.0



定制生产，工艺优化

专业设计团队，按图按需生产

Customized production

Professional design team, production on demand

自主研发，技术超前

行业领先技术，多项专利持有

Advanced R & D technology

Industry-leading technology,
holding a number of patents



CORE TECHNOLOGY

核心技术

关键技术

Key technology



小空间 大扭矩
Small space & high torque



单级传动效率>95%
Single-stage transmission efficiency>95%



机加工模数低于0.1
Machining modulus below 0.1



高速比 低噪音
High speed ratio & Low noise



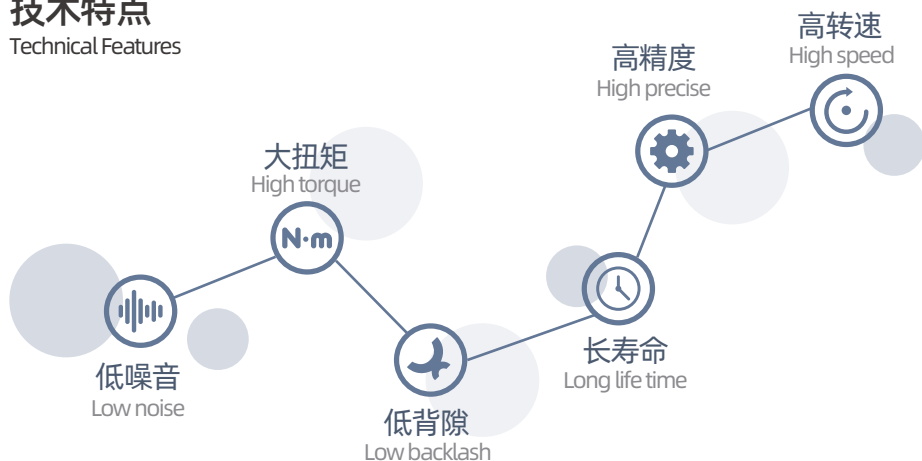
行星齿轮箱虚位<0.5°
Planetary gearbox virtual position <0.5°



行星齿轮箱内置离合结构
Clutch structure inner the planetary gearbox

技术特点

Technical Features

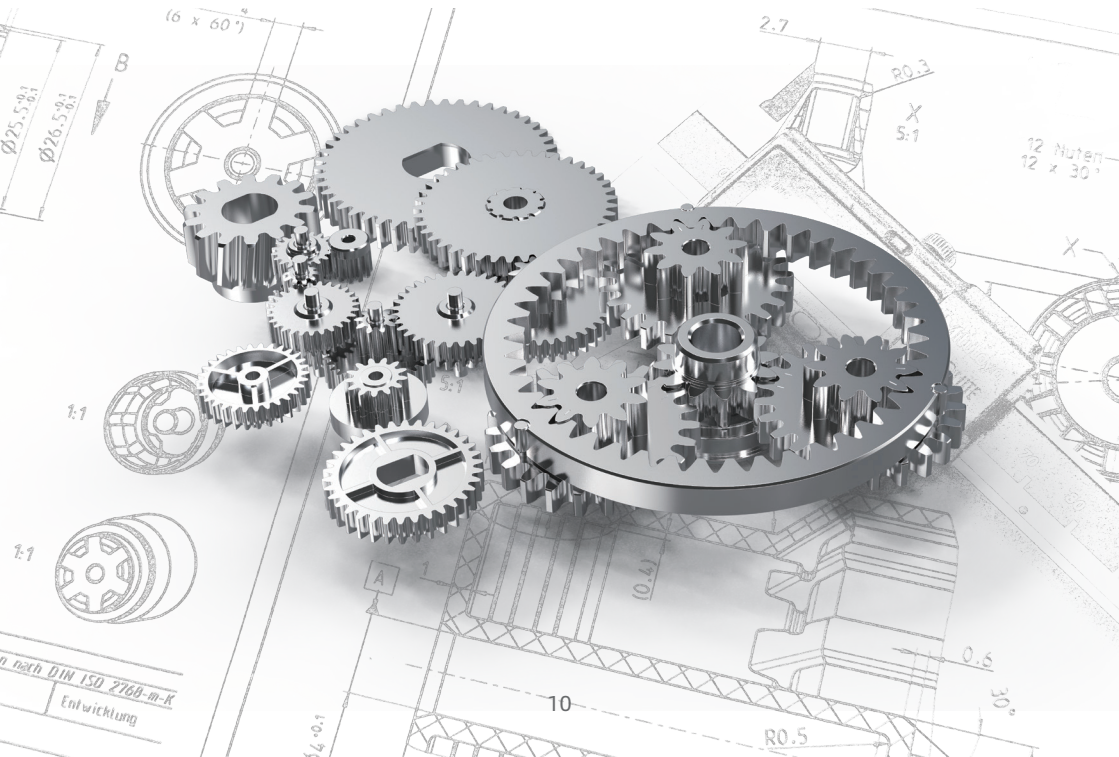


主要产品

MAIN PRODUCTS

产品介绍
Product Description

应用领域
Application Field



PRODUCT DESCRIPTION

产品介绍

机器人关节动力模组

Robot joint power module

材质：金属

减速比：9.2（可定制）

Material: Metal

Speed Ratio: 9.2 (Customized)



摆线针轮行星齿轮箱

Cycloidal pin gear planetary gearbox

材质：金属

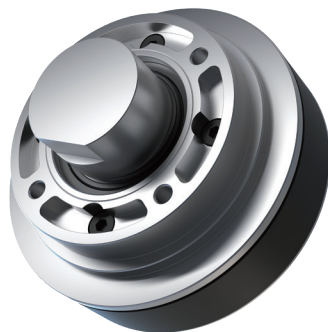
外径：30、42、60、70、90、120

减速比：29、39、49（可定制）

Material: Metal

Outer Diameter: 30、42、60、70、90、120

Speed Ratio: 29、39、49 (Customized)



内嵌式齿轮箱电机模组

Embedded Gearbox Motor Module

材质：金属

减速比：6.3（可定制）

Material: Metal and Plastic

Speed Ratio: 6.3 (Customized)



行星齿轮箱/减速电机

Planetary Gearbox & Geared motor

材质：金属/塑胶

外径：8mm-52mm

精度：ISO:GB/T 6-8级

Material: Metal and Plastic
Outer diameter: 8mm-52mm
Precision: ISO: GB/T grade 6-8



正齿轮箱

Spur Gearbox

材质：金属/塑胶

精度：ISO:GB/T 6-8级

Material: Metal and Plastic
Precision: ISO: GB/T grade 6-8



塑胶齿轮箱

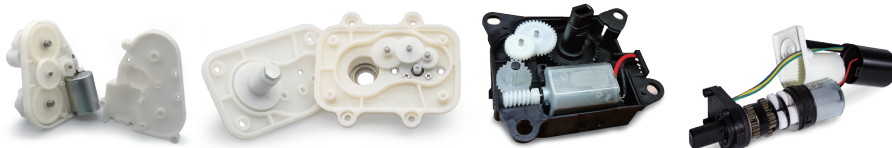
Spur Gearbox

主要优势：低成本，低噪音，高寿命

应用领域：家居智能、机器人、汽车系统、
光学设备、医疗设备、工业、办公自动化

Main advantage: Low cost, low noise, long life

Precision: Home intelligence, robotics, automotive systems, optical equipment, medical equipment, industry, office automation



精密配件

Harmonic reducer

类目：金属齿轮、塑胶齿轮（各类直齿、斜齿、蜗杆等）

主要描述：各类直齿、斜齿、蜗杆，模数M0.1~1.5，精度等级JGMA3，

Category: metal gears, plastic gears (all kinds of straight teeth, helical teeth, worms, etc.)

Main description: All kinds of straight teeth, helical teeth, worms, modulus M0.1~1.5, precision grade JGMA3



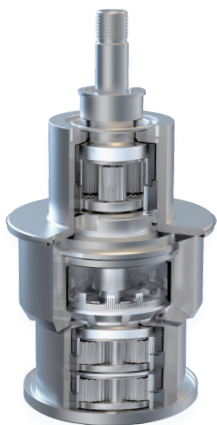
机器人 & 机械臂、外骨骼

Robot & Robotic arm、Exoskeleton



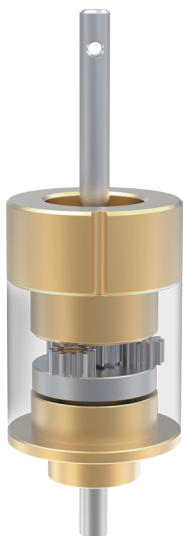
无人机

Drone



医疗设备

Medical Equipment



家居安防

Home Intelligence



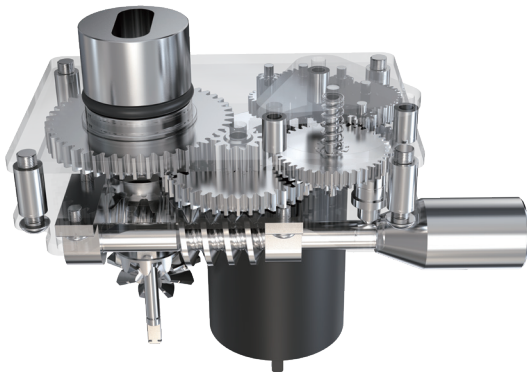
工业智能

Industrial Intelligence



智慧农业

Smart Agriculture



为什么选择西格？

WHY CHOOSE US?

团队介绍

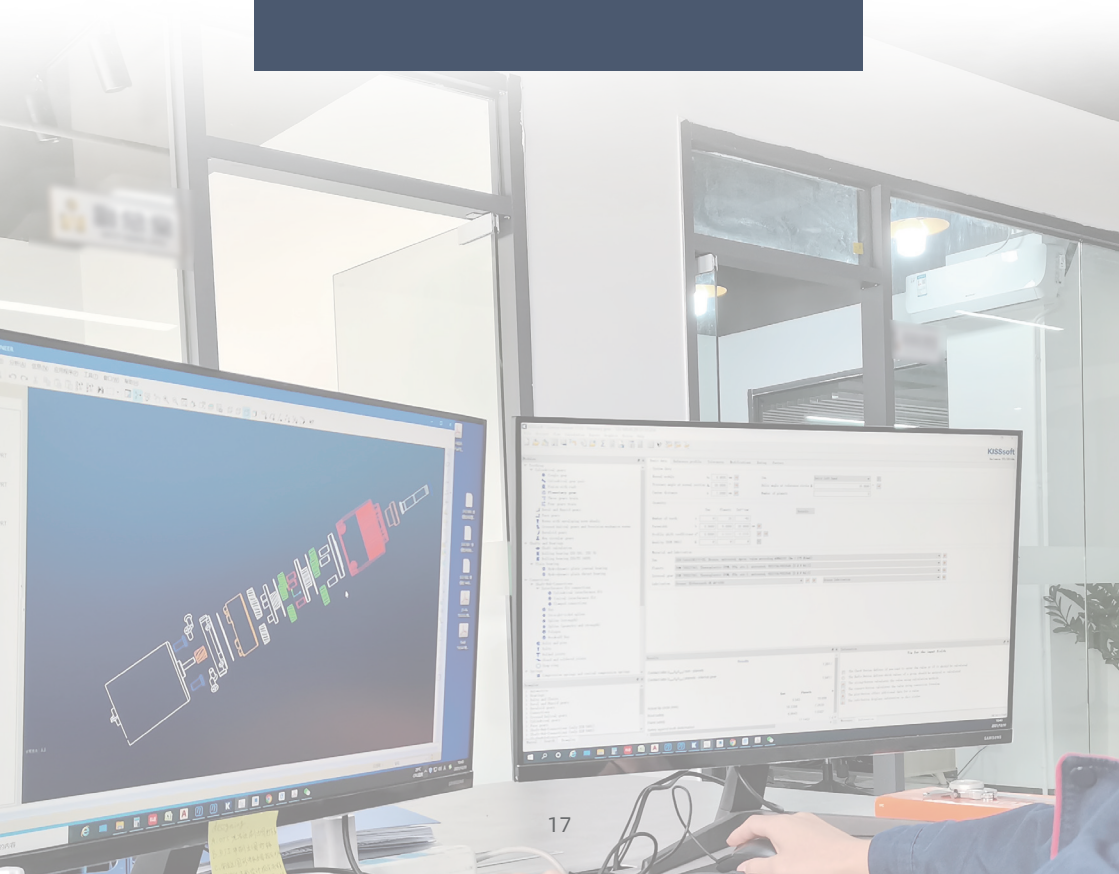
Team Introduction

西格工厂

Our Factory

荣誉资质

Honor & Ability

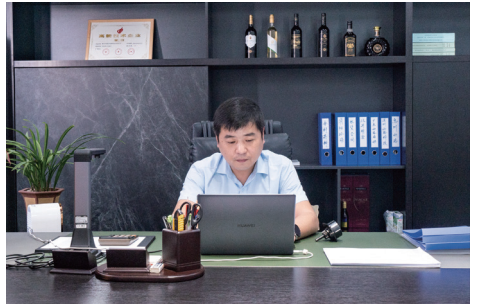


TEAM INTRODUCTION

团队介绍

十五年来，我们对齿轮传动技术的不断探索，紧跟科技发展的脚步，锐意进取，在学习中领悟，在专注中收获，不断追求创新、超越与突破。我们满怀传动情怀，致力于用专业的设计、高质量的产品，为客户量身定制传动解决方案；我们心怀梦想，以“突破传动技术壁垒、传承精密匠心智造、振兴民族传动工业”为目标，砥砺前行。我们一直在路上！

In the past fifteen years, we have continuously explored gear transmission technology, kept up with the pace of scientific and technological development, and forged ahead. We are committed to providing customers with solutions that fit their demand with high-quality products.



OUR FACTORY

西格工厂



设备先进

Advanced equipment

瑞士、德国、日本进口设备
高精密生产与高精度检测
品质保证

Equipment imported from Switzerland, Germany and Japan
High-precision production and high-precision testing
Quality Assurance



经验丰富

Production experience

15年以上行业经验
多行业应用场景

More than 15 years of industry experience
Multi-industry application scenarios

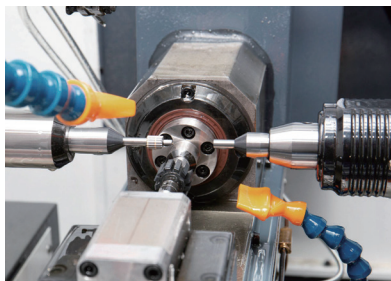
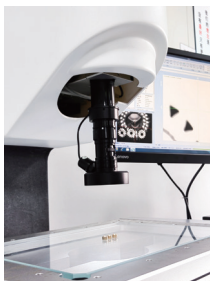


产能充足

Sufficient capacity

11条组装生产流水线
稳定高效，供给充足

11 assembly lines
Stable and efficient, sufficient supply





BRAND COOPERATION

品牌合作

Amphenol

OLIQ 瀚斯创研

MOONS

COXO 宇波医疗

oppo

Midea

SWATCH 瑞士雷达表

科大讯飞

HD 惠达卫浴

康诺思腾

dji 大疆创新

MicroPort 微创医疗

ILIFE 爱丽妃

LANTELLA

XAG 极飞科技

Bojin

EFT 埃福特

TCL

IP IP Power Printing

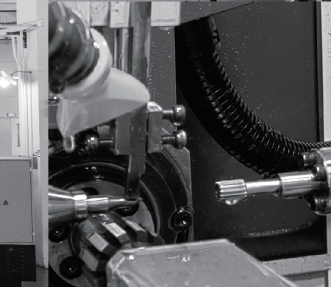
Enhanced Robotics

PGG

RCG

AGG

POSITEC



CERTIFICATE

证书

专利与认证

Patents and Certifications



一种应用于机器人的同向双出齿轮箱

行星减速电机 (红黑金)

一种行星差速变速轴及变速系统

行星减速电机

行星减速电机 (红银金)



IATF 16949:2016 汽车行业体系标准

ISO 9001:2015 品质管理体系

一种低噪音行星减速齿轮箱

一种无人机双向双输出齿轮箱

一种齿轮架自动装配冲压装置

一种齿轮加工车床送料装置



一种低磨损电动剪刀刀头结构及其双摆齿传动机构

一种电动剪刀的刀头机构

一种防水散热的拖地机分段式行星齿轮箱

一种线材挤出执行机构

一种用于公交安全带锁的紧急解锁执行机构

一种高稳定性行星减速齿轮箱

EQUIPMENT LIST

设备清单

生产设备

Production equipment

设备 Equipment	生产地 Manufacturer	设备 Equipment	生产商 Manufacturer
滚齿机 Hobbing Machine	瑞士/德国/日本 Switzerland/Germany/Japan	慢走丝 Gear Wire Walking	GF CUTE350 TTI, Japan
拉齿机 Gear Pulling Machine	中国台湾 Taiwang China	CNC CMM	北京精雕 Beijing Jingdiao
插齿机 Gear Shaping Machine	中国湖北 Hubei China		
注塑机 Injection Molding Machine	住友 / FANUC法兰克 / HAIDA海达 / Nissei NET日精 Switzerland/Germany/Japan		
火花机 Gear Shaping Machine	MAKINO EDGE2i / GF P350 / WINTOP Switzerland		
.....			



EQUIPMENT LIST

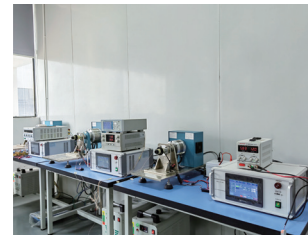
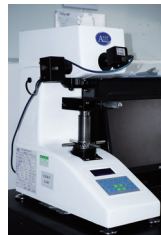
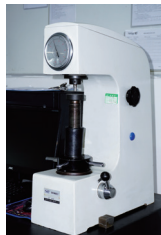
设备清单

检测设备

Production and testing equipment

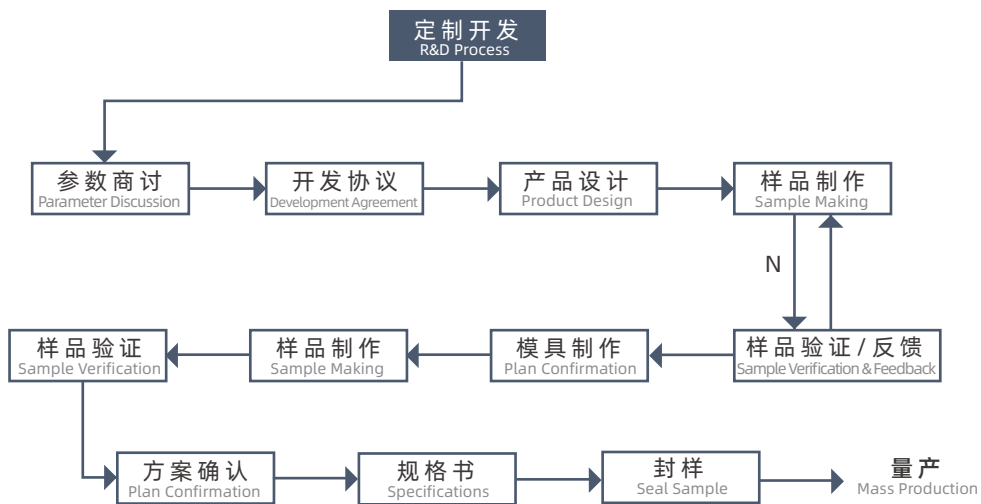
设备 Equipment	生产地 Manufacturer
三坐标测量仪 CMM	日本三丰 Mitutoyo
齿轮检测中心 Gear Testing Center	日本·TTi Tti Japan
齿轮啮合仪 Gear Mesh Tester	日本大阪 Osaka, Japan
三次元检测 Three-dimensional detection	海克斯康 Sweden HEXAGON
显微镜 Microscope	日本尼康 Nikon Japan
千分尺 Micrometer	日本三丰 Mitutoyo
测功机 Dynamometer	上海广法测控 China
.....	

设备 Equipment	生产商 Manufacturer
冷热冲击箱 Hot and cold shock box	爱思贝克 Avex
高低温 High and low temperature box	KSON Mitutoyo Japan
寿命测试仪 Life Tester	中国 China
盐雾测试仪 Salt Spray tester	TERCHY Mitutoyo Japan
ROHS2.0检测仪 ROHS2.0 Detector	莱州华仪 China
Xray检测 Xray Detection	日联 UNICOMP
背隙检测仪 Backlash Detector	中创 China
.....	



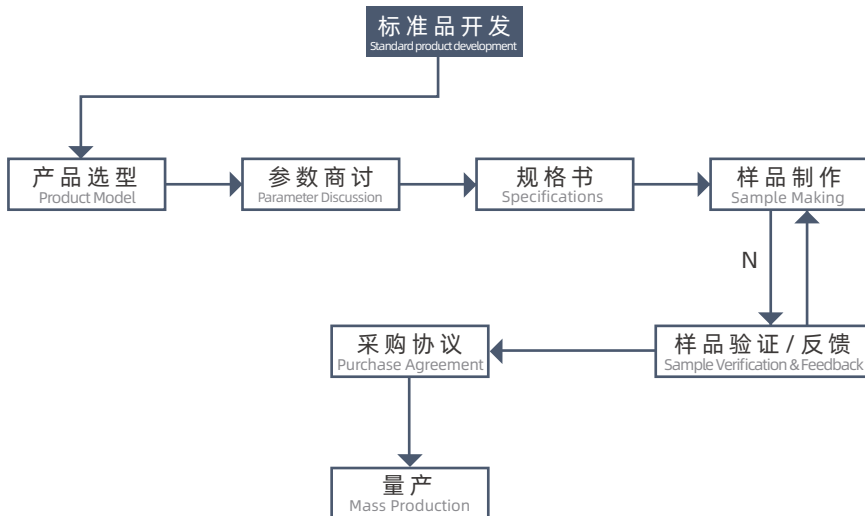
定制流程

Custom Process



标准品开发

Custom Process



技术参数

TECHNICAL PARAMETER

齿轮箱规格

Product Specifications

技术插图

Technical Illustration

产品参数

Product Parameters

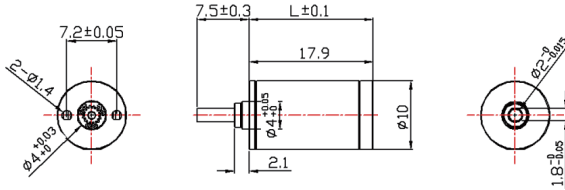


PLANETARY GEAR HEAD 10P

齿轮箱规格 Gearbox Specifications	外壳材料 Housing material	金属 Steel
	齿轮材料 Gearwhddtl material	金属 Steel
	输出轴承型式 Bearing at output	滚珠轴承 Ball bearings
	径向负载 Radial load (10mm from flange)	≤0.6 Kgf
	轴向负载 Shaft axial load	≤0.15 Kgf
	径向间隙 Radial play of shaft	≤0.04 mm
	轴向间隙 Thrust play of shaft	≤0.15 mm
	背隙 (空载时) Backlash,at no-load	≤1°
	连续运行时最高允许输入转速 Max permissible spees at continuous working	≤20000 rpm
	工作温度范围 Operating temperature range	-40~120°C



技术插图 Technical illustration



产品参数 Product parameters

级数 Number of stages	L (mm)	减速比 Reduction ratio	额定允许负载 Exact reduction torque	瞬间允许负载 Max momentary tolerance torque	效率 Efficiency
1	11.7	3.4 / 4 / 4.75 / 5.1 / 6	1.1 Kgf-cm	3.3 Kgf-cm	95%
2	14.8	11.4 / 12.5 / 13.6 / 16 / 17.3 / 19 / 20.4 / 22.6 24 / 25.9 / 28.5 / 36	2.0 Kgf-cm	6.0 Kgf-cm	90%
3	17.9	38.8 / 42.5 / 46.2 / 50 / 54.4 / 58.8 / 64 / 69.4 / 75 81.6 / 88.1 / 90.3 / 96.9 / 104 / 107.4 / 115.3 / 122.4 132.1 / 135.6 / 145.4 / 155.4 / 171 / 183.6 / 216	3.2 Kgf-cm	9.4 Kgf-cm	85%
4	21	38.3 / 42.9 / 64 / 129.7 / 131.9 / 157.1 / 216 / 185 200 / 219 / 236 / 256 / 277.4 / 307 / 326.4 / 353.6 363.8 / 387.6 / 392 / 416.2 / 428 / 449.1 / 461 489.6 / 494.4 / 542.4 / 581.4 / 621.6 / 624.2 / 684 690.7 / 734.4 / 738.2 / 741.5 / 812.3 / 864 / 872.1 932.4 / 1026 / 1102 / 1296	4.0 Kgf-cm	12 Kgf-cm	80%

注：表格内仅部分减速比，有其它需求请与业务人员沟通，接受特殊规格的设计和开发。

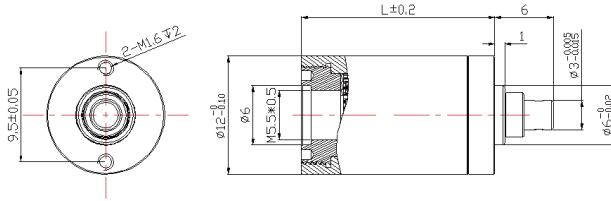
Note: Only part of the reduction ratio in the table, if you have any other requirement please communication with our sales manager and the special design and specification will be highly welcomed.

PLANETARY GEAR HEAD 12P

齿轮箱规格 Gearbox Specifications	外壳材料 Housing material	金属 Steel
	齿轮材料 Gearwhddt material	金属 Steel
	输出轴承型式 Bearing at output	滚珠轴承 Ball bearings
	径向负载 Radial load (10mm from flange)	≤0.8 Kgf
	轴向负载 Shaft axial load	≤0.25 Kgf
	径向间隙 Radial play of shaft	≤0.04 mm
	轴向间隙 Thrust play of shaft	≤0.2 mm
	背隙 (空载时) Backlash,at no-load	≤1°
	连续运行时最高允许输入转速 Max permissible spees at continuous working	≤42000 rpm
	工作温度范围 Operating temperature range	-40~120°C



技术插图 Technical illustration



产品参数 Product parameters

级数 Number of stages	L (mm)	减速比 Reduction ratio	额定允许负载 Exact reduction torque	瞬间允许负载 Max momentary tolerance torque	效率 Efficiency
1	12	3.4 / 4 / 4.75 / 5.1 / 6	2.0 Kgf-cm	6.0 Kgf-cm	95%
2	14.5	11.4 / 12.5 / 13.6 / 16 / 17.3 / 19 / 20.4 / 22.6 24 / 25.9 / 28.5 / 36	3.0 Kgf-cm	9.0 Kgf-cm	90%
3	17.1	38.8 / 42.5 / 46.2 / 50 / 54.4 / 58.8 / 64.6 / 69.4 75 / 81.6 / 88.1 / 90.3 / 96.9 / 104 / 107.4 / 115.3 122.4 / 132.1 / 135.6 / 145.4 / 155.4 / 171 / 183.6 216	3.6 Kgf-cm	10.8 Kgf-cm	85%
4	19.7	38.3 / 42.9 / 64 / 129.7 / 131.9 / 157.1 / 216 / 185 200 / 219 / 236 / 255 / 258 / 277.4 / 307 / 326.4 353.6 / 363.8 / 387.6 / 392 / 416.2 / 428 / 449.1 461 / 489.6 / 494.4 / 542.4 / 581.4 / 621.6 / 624.2 684 / 690.7 / 734.4 / 738.2 / 741.5 / 812.3 / 864 872.1 / 932.4 / 936.4 / 1026 / 1102 / 1296	4.2 Kgf-cm	12.6 Kgf-cm	80%

注：表格内仅部分减速比，有其它需求请与业务人员沟通，接受特殊规格的设计和开发。

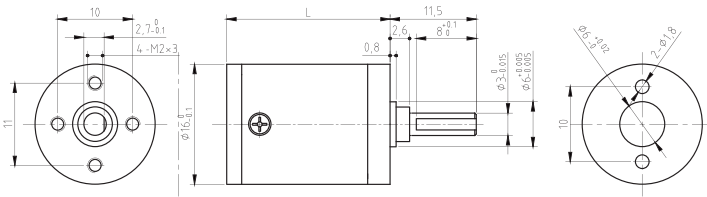
Note: Only part of the reduction ratio in the table, if you have any other requirement please communication with our sales manager and the special design and specification will be highly welcomed.

PLANETARY GEAR HEAD 16P

齿轮箱规格 Gearbox Specifications	外壳材料 Housing material	金属 Steel
	齿轮材料 Gearwhddt material	金属 Steel
	输出轴承型式 Bearing at output	滚珠轴承 Ball bearings
	径向负载 Redial load (10mm from flange)	≤1.6 Kgf
	轴向负载 Shaft axial load	≤0.5 Kgf
	径向间隙 Radial play of shaft	≤0.04 mm
	轴向间隙 Thrust play of shaft	≤0.2 mm
	背隙 (空载时) Backlash,at no-load	≤1.5°
	连续运行时最高允许输入转速 Max permissible spees at continuous working	≤42000 rpm
工作温度范围 Operating temperature range	-40~120°C	



技术插图 Technical illustration



产品参数 Product parameters

级数 Number of stages	L (mm)	减速比 Reduction ratio	额定允许负载 Exact reduction torque	瞬间允许负载 Max momentary tolerance torque	效率 Efficiency
1	17.2	3.75 / 4.4 / 5.4	4.2 Kgf-cm	12.6 Kgf-cm	95%
2	21.1	14.5 / 16.4 / 19.2 / 20.3 / 23.7 / 24.4 / 28.5 / 29.2 / 35.1	6.0 Kgf-cm	18.0 Kgf-cm	90%
3	25	48.2 / 54.5 / 61.7 / 67.1 / 75.9 / 80.8 / 88.8 / 97.5 / 103.8 / 106.9 / 109.3 / 125 / 131 / 154 / 185.3	7.5 Kgf-cm	22.5 Kgf-cm	85%
4	28.8	204.4 / 228 / 251.8 / 294.4 / 303 / 313.3 / 333 / 342.7 / 354.4 / 369.6 / 389.3 / 400.8 / 455.2 / 468.6 / 493.6 / 547.9 / 560.6 / 577.1 / 674.8 / 690.4	9.0 Kgf-cm	27 Kgf-cm	80%
5	32.6	738 / 850.3 / 977.2 / 1023.5 / 1136.6 / 1175 / 1232 / 1328.9 / 1447.2 / 1483 / 1502.9 / 1636.7 / 1692 / 1757 / 1785 / 1851 / 1914 / 1996 / 2055 / 2164 / 2402 / 2458 / 2530 / 2959 / 3027 / 3644 / 3728 / 4488 / 4592 / 5527 / 6653 / 8008 / 9639 / 11600	9.0 Kgf-cm	27 Kgf-cm	77%

注：表格内仅部分减速比，有其它需求请与业务人员沟通，接受特殊规格的设计和开发。

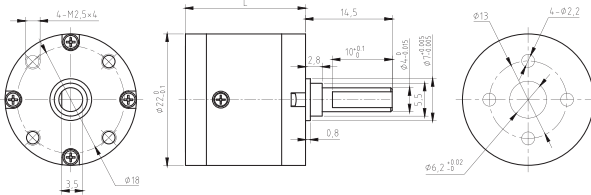
Note: Only part of the reduction ratio in the table, if you have any other requirement please communication with our sales manager and the special design and specification will be highly welcomed.

PLANETARY GEAR HEAD 22P

齿轮箱规格 Gearbox Specifications	外壳材料 Housing material	金属 Steel
	齿轮材料 Gearwhddl material	金属 Steel
	输出轴承型式 Bearing at output	滚珠轴承 Ball bearings
	径向负载 Radial load (10mm from flange)	≤1.6 Kgf
	轴向负载 Shaft axial load	≤0.5 Kgf
	径向间隙 Radial play of shaft	≤0.04 mm
	轴向间隙 Thrust play of shaft	≤0.2 mm
	背隙 (空载时) Backlash at no-load	≤1.5°
	连续运行时最高允许输入转速 Max permissible spees at continuous working	≤42000 rpm
	工作温度范围 Operating temperature range	-40~120°C



技术插图 Technical illustration



产品参数 Product parameters

级数 Number of stages	L (mm)	减速比 Reduction ratio	额定允许负载 Exact reduction torque	瞬间允许负载 Max momentary tolerance torque	效率 Efficiency
1	20.9	3.75 / 4.4 / 5.4	7.2 Kgf-cm	21.6 Kgf-cm	95%
2	25.8	14.5 / 16.4 / 19.2 / 20.3 / 23.7 / 24.4 / 28.5 / 29.2 / 35.1	9.6 Kgf-cm	28.8 Kgf-cm	90%
3	30.7	48.2 / 54.5 / 61.7 / 67.1 / 75.9 / 80.8 / 88.8 / 97.5 / 103.8 / 106.9 / 109.3 / 125 / 131 / 154 / 185.3	12 Kgf-cm	36 Kgf-cm	85%
4	35.5	204.4 / 228 / 251.8 / 294.4 / 303 / 313.3 / 333 / 342.7 / 354.4 / 369.6 / 389.3 / 400.8 / 455.2 / 468.6 / 493.6 / 547.9 / 560.6 / 577.1 / 674.8 / 690.4	14.5 Kgf-cm	43.5 Kgf-cm	80%
5	40.3	738 / 850.3 / 977.2 / 1023.5 / 1136.6 / 1175 / 1232 / 1328.9 / 1447.2 / 1483 / 1502.9 / 1636.7 / 1692 / 1757 / 1785 / 1851 / 1914 / 1996 / 2055 / 2164 / 2402 / 2458 / 2530 / 2959 / 3027 / 3644 / 3728 / 4488 / 4592 / 5527 / 6653 / 8008 / 9639 / 11600	14.5 Kgf-cm	43.5 Kgf-cm	77%

注：表格内仅部分减速比，有其它需求请与业务人员沟通，接受特殊规格的设计和开发。

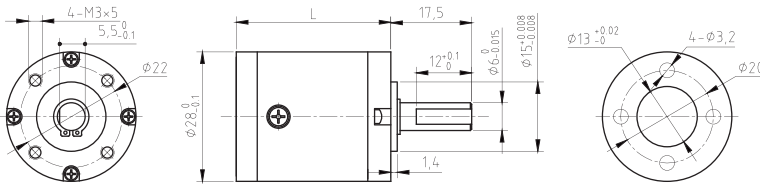
Note: Only part of the reduction ratio in the table, if you have any other requirement please communication with our sales manager and the special design and specification will be highly welcomed.

PLANETARY GEAR HEAD 28P

齿轮箱规格 Gearbox Specifications	外壳材料 Housing material	金属 Steel
	齿轮材料 Gearwhiddl material	金属 Steel
	输出轴承型式 Bearing at output	滚珠轴承 Ball bearings
	径向负载 Redial load (10mm from flange)	≤6.0 Kgf
	轴向负载 Shaft axial load	≤3.0 Kgf
	径向间隙 Radial play of shaft	≤0.04 mm
	轴向间隙 Thrust play of shaft	≤0.2 mm
	背隙 (空载时) Backlash at no-load	≤1.5°
	连续运行时最高允许输入转速 Max permissible spees at continuous working	≤35000 rpm
	工作温度范围 Operating temperature range	-40~120°C



技术插图 Technical illustration



产品参数 Product parameters

级数 Number of stages	L (mm)	减速比 Reduction ratio	额定允许负载 Exact reduction torque	瞬间允许负载 Max momentary tolerance torque	效率 Efficiency
1	27	4.4 / 5.25 / 6.7	15.5 Kgf-cm	46.5 Kgf-cm	95%
2	33.4	15.1 / 16.9 / 18 / 19.4 / 20.1 / 23.1 / 25.6 / 27.6 29.3 / 31.8 / 35 / 36.5 / 43.5	21 Kgf-cm	63 Kgf-cm	90%
3	39.8	61.7 / 68.7 / 77.1 / 87.6 / 100.6 / 109 / 120 / 125 129 / 134.1 / 139.8 / 144.7 / 149.1 / 154 / 160.4 166.8 / 183.8 / 191.4 / 211.7 / 228.4 / 233.3 / 243 264.5 / 290 / 296.3	26 Kgf-cm	78 Kgf-cm	85%
4	46.1	335.9 / 344.8 / 368.2 / 373.4 / 375.5 / 385.5 / 411.4 417.4 / 428.5 / 431 / 447.2 / 460 / 466.7 / 479.2 494.8 / 511.3 / 528 / 535.7 / 567.9 / 571.7 / 590.3 630 / 639.2 / 656.2 / 677.6 / 705.8 / 733.7 / 749.6 759.7 / 800 / 833.3 / 842.1 / 860.4 / 894.4 / 902.2 1036 / 1304 / 1586 / 1975 / 2014 / 2403 / 3051	31 Kgf-cm	93 Kgf-cm	80%

注：表格内仅部分减速比，有其它需求请与业务人员沟通，接受特殊规格的设计和开发。

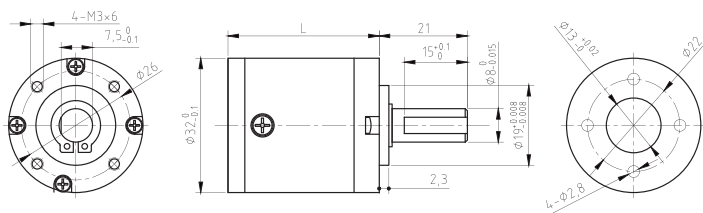
Note: Only part of the reduction ratio in the table, if you have any other requirement please communication with our sales manager and the special design and specification will be highly welcomed.

PLANETARY GEAR HEAD 32P

齿轮箱规格 Gearbox Specifications	外壳材料 Housing material	金属 Steel
	齿轮材料 Gearwheel material	金属 Steel
	输出轴承型式 Bearing at output	滚珠轴承 Ball bearings
	径向负载 Radial load (10mm from flange)	≤8.0 Kgf
	轴向负载 Shaft axial load	≤3.5 Kgf
	径向间隙 Radial play of shaft	≤0.04 mm
	轴向间隙 Thrust play of shaft	≤0.2 mm
	背隙 (空载时) Backlash, at no-load	≤1.5°
	连续运行时最高允许输入转速 Max permissible spees at continuous working	≤35000 rpm
	工作温度范围 Operating temperature range	-40~120°C



技术插图 Technical illustration



产品参数 Product parameters

级数 Number of stages	L (mm)	减速比 Reduction ratio	额定允许负载 Exact reduction torque	瞬间允许负载 Max momentary tolerance torque	效率 Efficiency
1	29	4.4 / 5.25 / 6.7	23.4 Kgf-cm	70.2 Kgf-cm	95%
2	36.3	15.1 / 16.9 / 18 / 19.4 / 20.1 / 23.1 / 25.6 / 27.6 29.3 / 31.8 / 35 / 36.5 / 43.5	31.0 Kgf-cm	93.0 Kgf-cm	90%
3	43.6	61.7 / 68.7 / 77.1 / 87.6 / 100.6 / 109 / 120 / 125 129 / 134.1 / 139.8 / 144.7 / 149.1 / 154 / 160.4 166.8 / 183.8 / 191.4 / 211.7 / 228.4 / 233.3 / 243 264.5 / 290 / 296.3	38.8 Kgf-cm	116.4 Kgf-cm	85%
4	50.8	335.9 / 344.8 / 368.2 / 373.4 / 375.5 / 385.5 / 411.4 417.4 / 428.5 / 431 / 447.2 / 460 / 466.7 / 479.2 494.8 / 511.3 / 528 / 535.7 / 567.9 / 571.7 / 590.3 630 / 639.2 / 656.2 / 677.6 / 705.8 / 733.7 / 749.6 759.7 / 800 / 833.3 / 842.1 / 860.4 / 894.4 / 902.2 1036 / 1304 / 1586 / 1975 / 2014 / 2403 / 3051	46.5 Kgf-cm	139.5 Kgf-cm	80%

注：表格内仅部分减速比，有其它需求请与业务人员沟通，接受特殊规格的设计和开发。

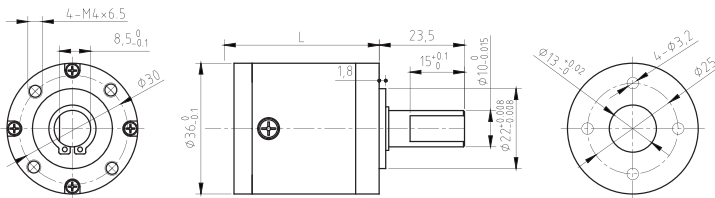
Note: Only part of the reduction ratio in the table, if you have any other requirement please communication with our sales manager and the special design and specification will be highly welcomed.

PLANETARY GEAR HEAD 36P

齿轮箱规格 Gearbox Specifications	外壳材料 Housing material	金属 Steel
	齿轮材料 Gearwhddl material	金属 Steel
	输出轴承型式 Bearing at output	滚珠轴承 Ball bearings
	径向负载 Radial load (10mm from flange)	≤10 Kgf
	轴向负载 Shaft axial load	≤6.0 Kgf
	径向间隙 Radial play of shaft	≤0.04 mm
	轴向间隙 Thrust play of shaft	≤0.4 mm
	背隙 (空载时) Backlash,at no-load	≤1.5°
	连续运行时最高允许输入转速 Max permissible spees at continuous working	≤30000 rpm
	工作温度范围 Operating temperature range	-40~120°C



技术插图 Technical illustration



产品参数 Product parameters

级数 Number of stages	L (mm)	减速比 Reduction ratio	额定允许负载 Exact reduction torque	瞬间允许负载 Max momentary tolerance torque	效率 Efficiency
1	31.6	4.3 / 5.1 / 6.3	32.4 Kgf-cm	97.2 Kgf-cm	95%
2	40	14.7 / 16.3 / 17.3 / 18.6 / 19.2 / 21.9 / 23.9 / 25.8 27.2 / 28.9 / 32 / 32.9 / 38.7 / 39.7 / 48	43.2 Kgf-cm	129.6 Kgf-cm	90%
3	48.4	65.6 / 74.6 / 81.4 / 90.5 / 92.6 / 98.5 / 109 / 112.1 117.2 / 124.6 / 132 / 138 / 141.8 / 146.7 / 150.4 162.4 / 166.9 / 171.2 / 182 / 196.5 / 201.5 / 207.1 220.3 / 243.9 / 250.7	54.0 Kgf-cm	162 Kgf-cm	85%
4	56.7	277.4 / 295.2 / 302.6 / 315.8 / 335.8 / 342.8 / 351 366.2 / 373.3 / 382.2 / 399.4 / 413.2 / 424.8 / 450 459.3 / 472.2 / 483.4 / 500.1 / 512.7 / 537.4 / 555.9 569.1 / 583.5 / 611.5 / 620.6 / 648 / 670 / 706.2 744.7 / 785 / 824.4 / 847.6 / 869 / 924.2 / 1006 1023 / 1052 / 1078 / 1081 / 1119 / 1147 / 1238 1269 / 1272 / 1305 / 1388 / 1499 / 1536 / 1580 1680 / 1860 / 1907 / 2251 / 2307 / 2793	64.8 Kgf-cm	194.4 Kgf-cm	80%

注：表格内仅部分减速比，有其它需求请与业务人员沟通，接受特殊规格的设计和开发。

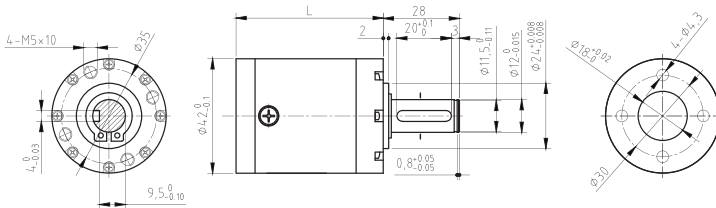
Note: Only part of the reduction ratio in the table, if you have any other requirement please communication with our sales manager and the special design and specification will be highly welcomed.

PLANETARY GEAR HEAD 42P

齿轮箱规格 Gearbox Specifications	外壳材料 Housing material	金属 Steel
	齿轮材料 Gearwhddt material	金属 Steel
	输出轴承型式 Bearing at output	滚珠轴承 Ball bearings
	径向负载 Radial load (10mm from flange)	≤16 Kgf
	轴向负载 Shaft axial load	≤8.0 Kgf
	径向间隙 Radial play of shaft	≤0.04 mm
	轴向间隙 Thrust play of shaft	≤0.4 mm
	背隙 (空载时) Backlash,at no-load	≤1.5°
	连续运行时最高允许输入转速 Max permissible spees at continuous working	≤30000 rpm
	工作温度范围 Operating temperature range	-40~120°C



技术插图 Technical illustration



产品参数 Product parameters

级数 Number of stages	L (mm)	减速比 Reduction ratio	额定允许负载 Exact reduction torque	瞬间允许负载 Max momentary tolerance torque	效率 Efficiency
1	43.3	4.3 / 5.1 / 6.3	65 Kgf-cm	195 Kgf-cm	95%
2	54.1	14.7 / 16.3 / 17.3 / 18.6 / 19.2 / 21.9 / 23.9 / 25.8 27.2 / 28.9 / 32 / 32.9 / 38.7 / 39.7 / 48	86 Kgf-cm	258 Kgf-cm	90%
3	64.9	65.6 / 74.6 / 81.4 / 90.5 / 92.6 / 98.5 / 109 / 112.1 117.2 / 124.6 / 132 / 138 / 141.8 / 146.7 / 150.4 162.4 / 166.9 / 171.2 / 182 / 196.5 / 201.5 / 207.1 220.3 / 243.9 / 250.7	108 Kgf-cm	324 Kgf-cm	85%
4	75.6	277.4 / 295.2 / 302.6 / 315.8 / 335.8 / 342.8 / 351 366.2 / 373.3 / 382.2 / 399.4 / 413.2 / 424.8 / 450 459.3 / 472.2 / 483.4 / 500.1 / 512.7 / 537.4 / 555.9 569.1 / 583.5 / 611.5 / 620.6 / 648 / 670 / 706.2 744.7 / 785 / 824.4 / 847.6 / 869 / 924.2 / 1006 1023 / 1052 / 1078 / 1081 / 1119 / 1147 / 1238 1269 / 1272 / 1305 / 1388 / 1499 / 1536 / 1580 1680 / 1860 / 1907 / 2251 / 2307 / 2793	130 Kgf-cm	390 Kgf-cm	80%

注：表格内仅部分减速比，有其它需求请与业务人员沟通，接受特殊规格的设计和开发。

Note: Only part of the reduction ratio in the table, if you have any other requirement please communication with our sales manager and the special design and specification will be highly welcomed.



扫码关注微信公众号



扫码浏览官方网站



SigGear 
西格传动

广东西格传动智能科技有限公司

Guangdong Siggear Drive Intelligent Technology Co.,Ltd

 Tel/We-chat/Whatsapp: +86 199 0248 2998

 E-mail: alvin.zheng@siggearbox.com

 Web: WWW.siggearbox.com

 Add: Building A22, Yuehai Industrial Park,

No. 780, Xiecao Road, Xiegang Town, Dongguan City, Guangdong Province